

Description

In many commercial and residential situations, led flat panel light fixture is an ideal replacement for traditional grid lamp. Panel led lights with high lumen output, high CRI>80.

Featuring louver reflectors design technology, SLPLA panel light offers the ideal combination of stylish design and optimum performance for both task and general lighting. Ensures optimum light distribution and full glare control in compliance with the latest office-lighting (UGR<13).

Key Features

- Tool-free maintenance
- High brightness,
- IP4X, No UV/IR light

Applications

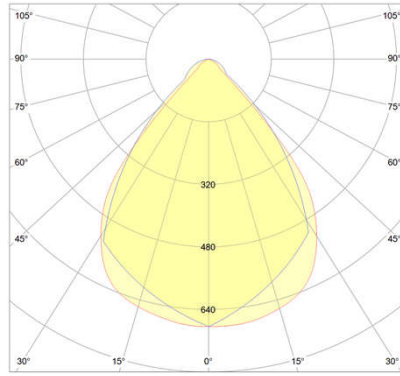
- Office & school lighting: office room, meeting room, classroom etc.
- Commercial lighting: shopping mall, supermarket, retailer shops etc.
- Other situations: hospital, laboratory, dust-free workshop etc.

Specifications

Model No.	SLPLAC030S	SLPLAC035S	SLPLAD030S	SLPLAD035S
Power Consumption	30W	35W	30W	35W
LED Type	Smd 2835			
Luminous Flux up to	3390lm	3850lm	3390lm	3850lm
Efficacy up to	115lm/W(4000K)			
Correlated Color	4000K (3000K, 5000K optional)			
Color Rendering Index	Ra80			
Beam Angle	80°			
Power Supply	Electronic Driver			
Input Voltage	AC220-240V (dim AC200-240V)			
Power Factor	>0.90			
Frequency	50/60 Hz			
Driver Type	Constant Current (CC)			
Product Dimension	595x595x28mm	595x595x28mm	295x1195x28mm	295x1195x28mm
Luminaire Net Weight	4,2±0.1kg	4,2±0.1kg	4,2±0.1kg	4,2±0.1kg
Material	Housing	Die-cast Aluminum		
	Optics	Polycarbonate Optical Lens		
Protection Class	Class II			
Protection Rating	IP40			
Installation Method	See accessory			
Operating Temperature	-20°C to +45°C			
Life Time	>50,000Hrs (Ta=25°)			
Warranty	5 Years			
Dimmable	Triac dim (8% -100%)			
Accessory				
Recessed plaster frame	SLRF606001	SLRF606001	SLRF3012001	SLRF3012001
Cutout (mm)	610x610	610x610	310X1210	310X1210
Ceiling kit size (mm)	630x630	630x630	330X1230	330X1230

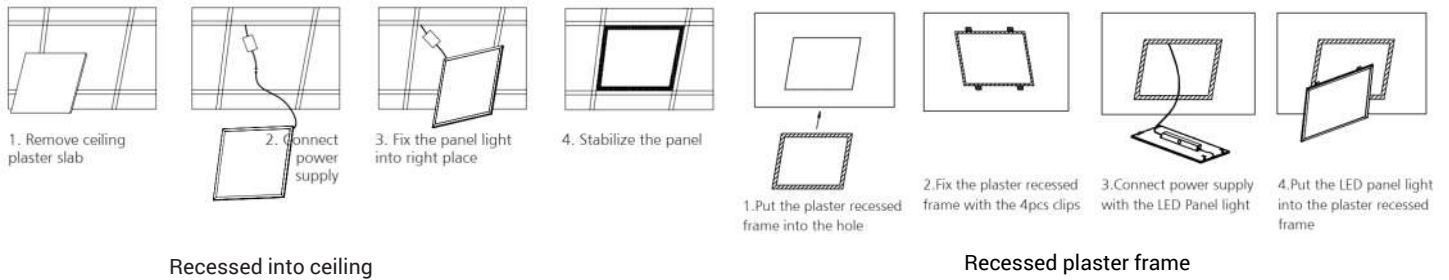
The values in this technical data sheet are to be considered subject to tolerances

Photometry



080

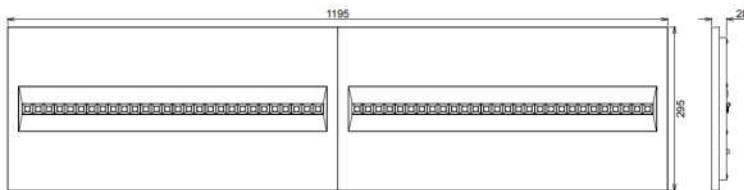
Mounting Options



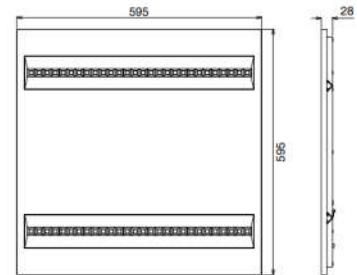
Recessed into ceiling

Recessed plaster frame

Dimensions

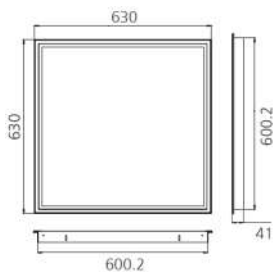


SLPLAD

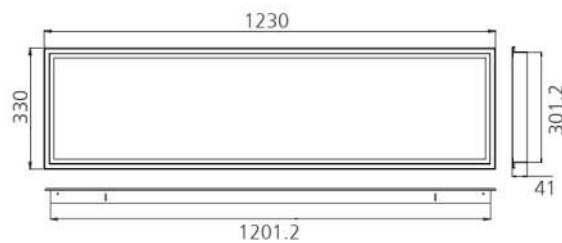


SLPLAC

Accessories



SLRF606001



SLRF3012001



SLRF01